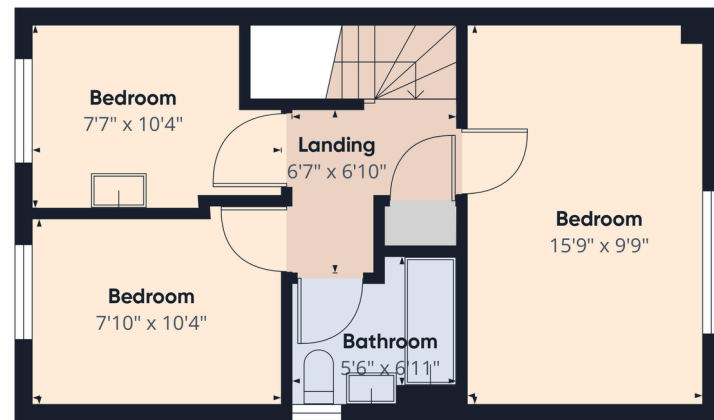


Floor 0



Floor 1



Approximate total area⁽¹⁾
805 ft²

(1) Excluding balconies and terraces

Calculations reference the RICS IPMS 3C standard. Measurements are approximate and not to scale. This floor plan is intended for illustration only.

GIRAFFE360



54 Haremos View
Whitburn, EH47 0BF

DESCRIPTION

Beautifully presented throughout, this stylish three-bedroom end-of-terrace home offers contemporary living in a highly appealing package, making it an ideal purchase for first-time buyers, young professionals and growing families alike.

Thoughtfully designed for modern family living, the property enjoys bright and spacious accommodation throughout. The welcoming living room provides an excellent space to relax and unwind and boasts a wealth of natural light creating a warm and inviting atmosphere.

Undoubtedly the heart of the home is the impressive dining kitchen. Finished with sleek white cabinetry and centred around a stylish island with integrated breakfast seating, this contemporary space is perfectly suited to both everyday living and entertaining. Large French doors draw in natural light and open directly onto the private enclosed rear garden, seamlessly blending indoor and outdoor living during the warmer months.

A practical ground floor WC adds further convenience, particularly for hosting family and friends.

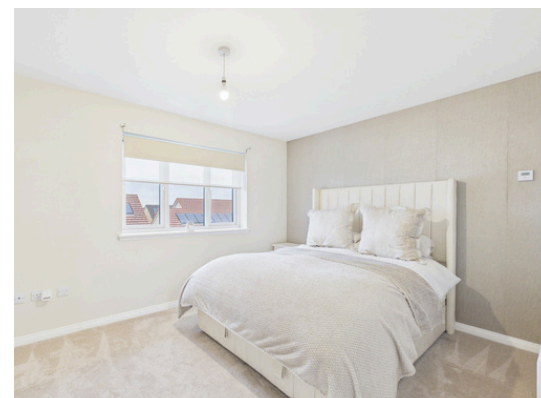
The upper level offers a spacious and bright principal bedroom, alongside two further bedrooms. Whether utilised as children's rooms, guest accommodation or a dedicated home office, the flexible layout will appeal to a wide range of buyers. A modern family bathroom with shower over bath completes the accommodation.

Externally, the generous rear garden provides a wonderful outdoor retreat, offering ample space for entertaining, al fresco dining or simply enjoying a peaceful moment outdoors. Private, enclosed and easy to maintain, it represents a fantastic extension of a living space.

Combining stylish interiors, practical family living and move-in-ready accommodation, this exceptional home presents a fantastic opportunity for buyers seeking a property they can enjoy from day one.

Key Features:

- Stylish three bedroom end terrace home
- Ideal for first time buyers
- Contemporary interiors throughout
- Move-in-ready condition
- Modern dining kitchen with island
- French doors to rear garden
- Ground floor WC
- Shower over Bath in family bathroom
- Generous enclosed rear garden



LOCATION

Whitburn is a popular West Lothian town offering an excellent balance of convenience, community and connectivity. A wide range of local amenities are available nearby, including supermarkets, cafés, leisure facilities and well-regarded schooling, making the area particularly appealing to families and professionals alike.

Ideally positioned between Edinburgh and Glasgow, Whitburn benefits from excellent transport links, with easy access to the M8 motorway and nearby rail services providing regular connections across the Central Belt. Surrounded by attractive green spaces and enjoying a strong sense of community, Whitburn continues to be a sought-after location for a wide range of buyers.

